



MyBox: Easy Tools Set User Guide – Development Tools

Author: Mara
Version: 6.7.1
Date: 2023-3-13

Contents

1 Introduction.....	3
1.1 Main Interface.....	3
1.2 Resources Addresses.....	4
1.3 Documents.....	5
1.4 Menu of Tools.....	7
2 Monitor CPU/Memory.....	7
3 MyBox Properties.....	8
4 MyBox Logs.....	9
5 Run system commands.....	10
6 Start JConsole(Java Monitoring and Management Console).....	11
7 Manage Languages.....	12
8 Make Icons.....	13
9 MyBox Internal Tables.....	14
10 Automatical Testing: Open Interfaces.....	15
11 Send Message To Author.....	16

1 Introduction

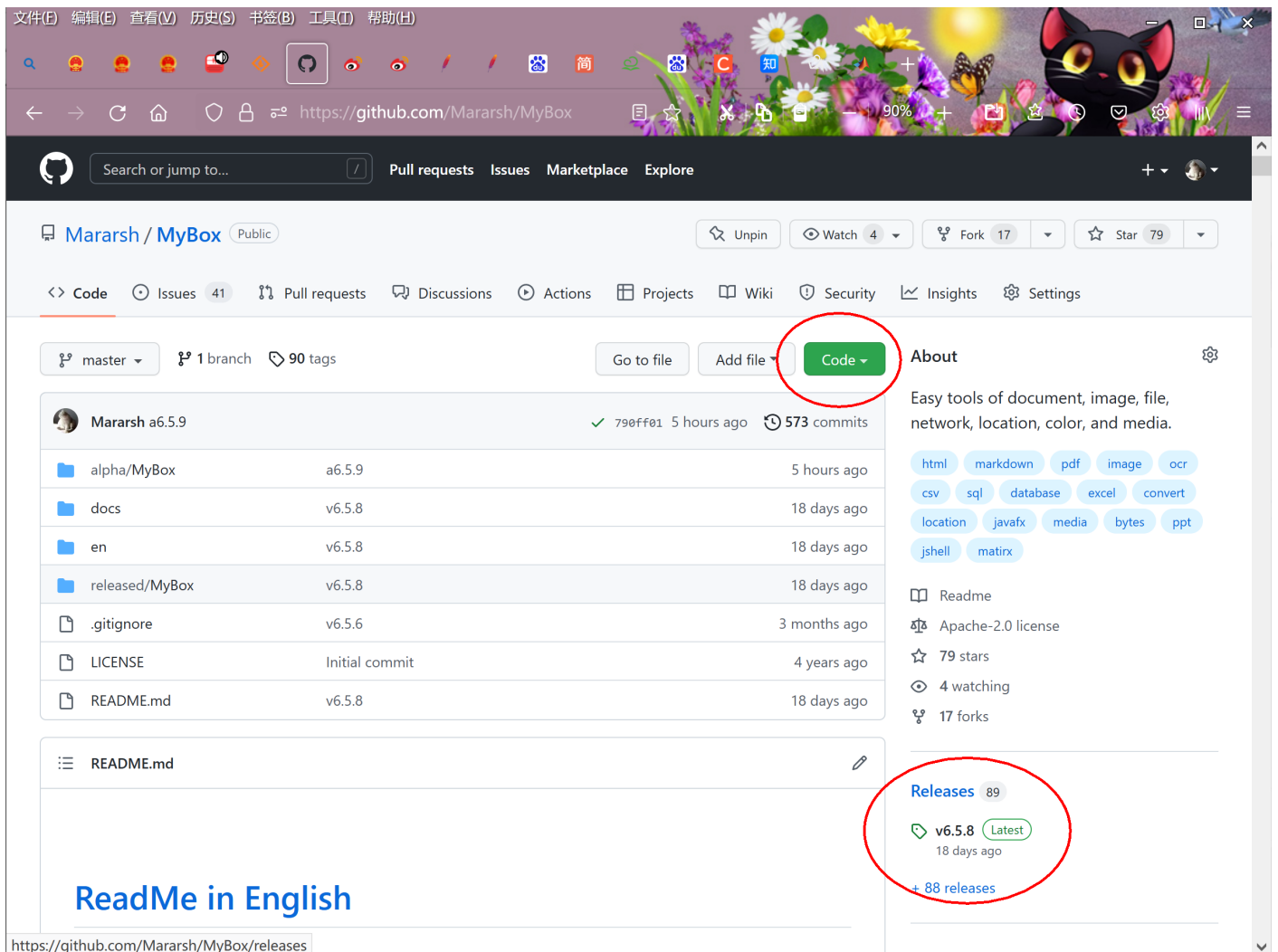
This is desktop application based on JavaFx to provide simple and easy functions. It's free and open sources.

1.1 Main Interface



1.2 Resources Addresses

Contents	Link
Project Main Page	https://github.com/Mararsh/MyBox/
Source Codes and Compiled Packages	https://github.com/Mararsh/MyBox/releases
Submit Software Requirements and Problem Reports	https://github.com/Mararsh/MyBox/issues
Data	https://github.com/Mararsh/MyBox_data
Documents	https://github.com/Mararsh/MyBoxDoc
Mirror Site	https://sourceforge.net/projects/mara-mybox/files/
Cloud Storage	https://pan.baidu.com/s/1fWMRzym_jh075OCX0D8y8A#list/path=%2F



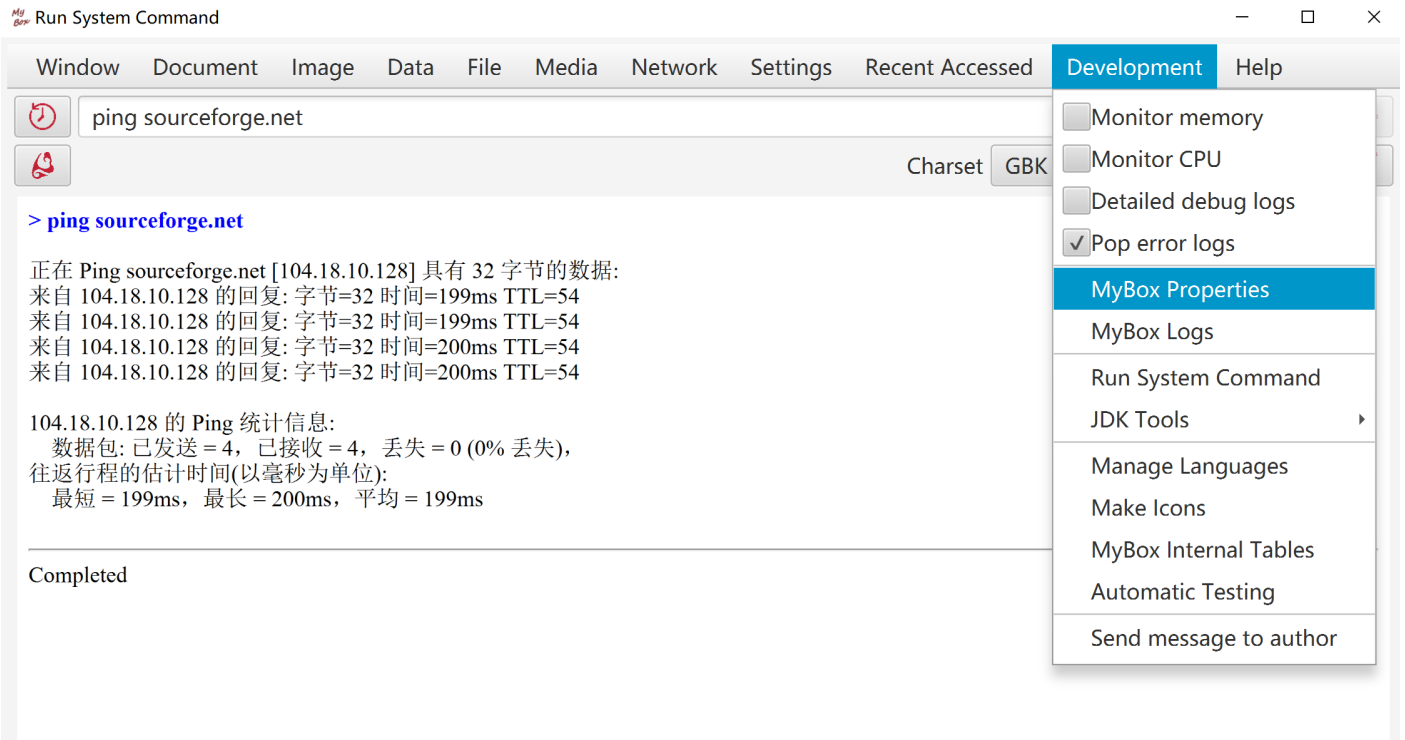
1.3 Documents

Name	Version	Time	English	Chinese
Development Logs	6.7.1	2023-3-13	html	html
Shortcuts	6.7.1	2023-3-13	html	html
Functions list	6.7.1	2023-3-13	html	html
Packing Steps	6.7.1	2023-3-13	html	html
Development Guide	2.1	2020-8-27	PDF odt	PDF odt
User Guide - Overview	6.7.1	2023-3-13	html PDF odt	html PDF odt
User Guide - Data Tools	6.7.1	2023-3-13	html PDF odt	html PDF odt
User Guide - Document Tools	6.7.1	2023-3-13	html PDF odt	html PDF odt
User Guide - Image Tools	6.7.1	2023-3-13	html PDF odt	html PDF odt
User Guide - File Tools	6.7.1	2023-3-13	html PDF odt	html PDF odt
User Guide - Network Tools	6.7.1	2023-3-13	html PDF odt	html PDF odt
User Guide - Media Tools	6.7.1	2023-3-13	html PDF odt	html PDF odt
User Guide - Development Tools	6.7.1	2023-3-13	html PDF odt	html PDF odt
Examples - Information in Tree	6.6.1	2022-11-16	html	html
Examples - Favorite Address	6.6.1	2022-11-16	html	html
Examples - Notes	6.7.1	2023-3-13	html	html
Examples - SQL	6.6.1	2022-11-16	html	html
Examples - JShell	6.6.1	2022-11-16	html	html
Examples - JEXL	6.6.1	2022-11-16	html	html
Examples - JavaScript	6.6.1	2022-11-16	html	html
Examples - Math Function	6.6.1	2022-11-16	html	html
Examples - Row Filter	6.6.1	2022-11-16	html	html
About - data grouping	6.7.1	2023-3-13	html	html
About - Color	6.6.1	2022-11-16	html	html
About - Coordinate System	6.6.1	2022-11-16	html	html
About - Media	6.6.1	2022-11-16	html	html
About - Data Analysis	6.6.1	2022-11-16	html	html
About - Items in one sentence about java	6.7.1	2023-3-13	html	html
About - Items in one sentence about javafx	6.7.1	2023-3-13	html	html
Palette - Art hues wheel(RYB) - 24 colors	6.7.1	2023-3-13	rgba all	rgba all
Palette - Common Web Colors	6.7.1	2023-3-13	rgba all	rgba all
Palette - Chinese Traditional Colors	6.7.1	2023-3-13	rgba all	rgba all
Palette - Japanese Traditional Colors	6.7.1	2023-3-13	rgba all	rgba all
Palette - Colors from colorhexa.com	6.7.1	2023-3-13	rgba all	rgba all

MyBox User Guide – Development Tools v6.7.1

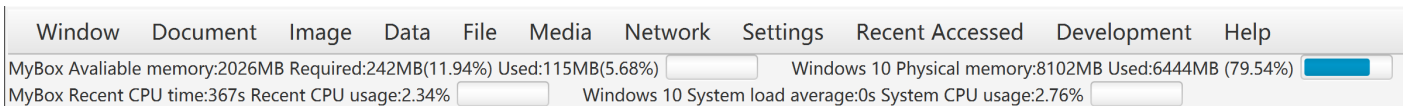
Name	Version	Time	English	Chinese
Palette - Art hues wheel(RYB) - 12 colors	6.7.1	2023-3-13	rgba all	rgba all
Palette - Art hues wheel(RYB) - 360 colors	6.7.1	2023-3-13	rgba all	rgba all
Palette - Optical hues wheel(RGB) - 12 colors	6.7.1	2023-3-13	rgba all	rgba all
Palette - Optical hues wheel(RGB) - 24 colors	6.7.1	2023-3-13	rgba all	rgba all
Palette - Optical hues wheel(RGB) - 260 colors	6.7.1	2023-3-13	rgba all	rgba all
Palette - Art paints	6.7.1	2023-3-13	rgba all	rgba all
Palette - MyBox Colors	6.7.1	2023-3-13	rgba all	rgba all
Palette - Gray scale	6.7.1	2023-3-13	rgba all	rgba all
Stories of Images	6.7.1	2023-3-13	html PDF odt	html PDF odt

1.4 Menu of Tools



2 Monitor CPU/Memory

When monitor CPU/memory, status is updated in every second in top bar.



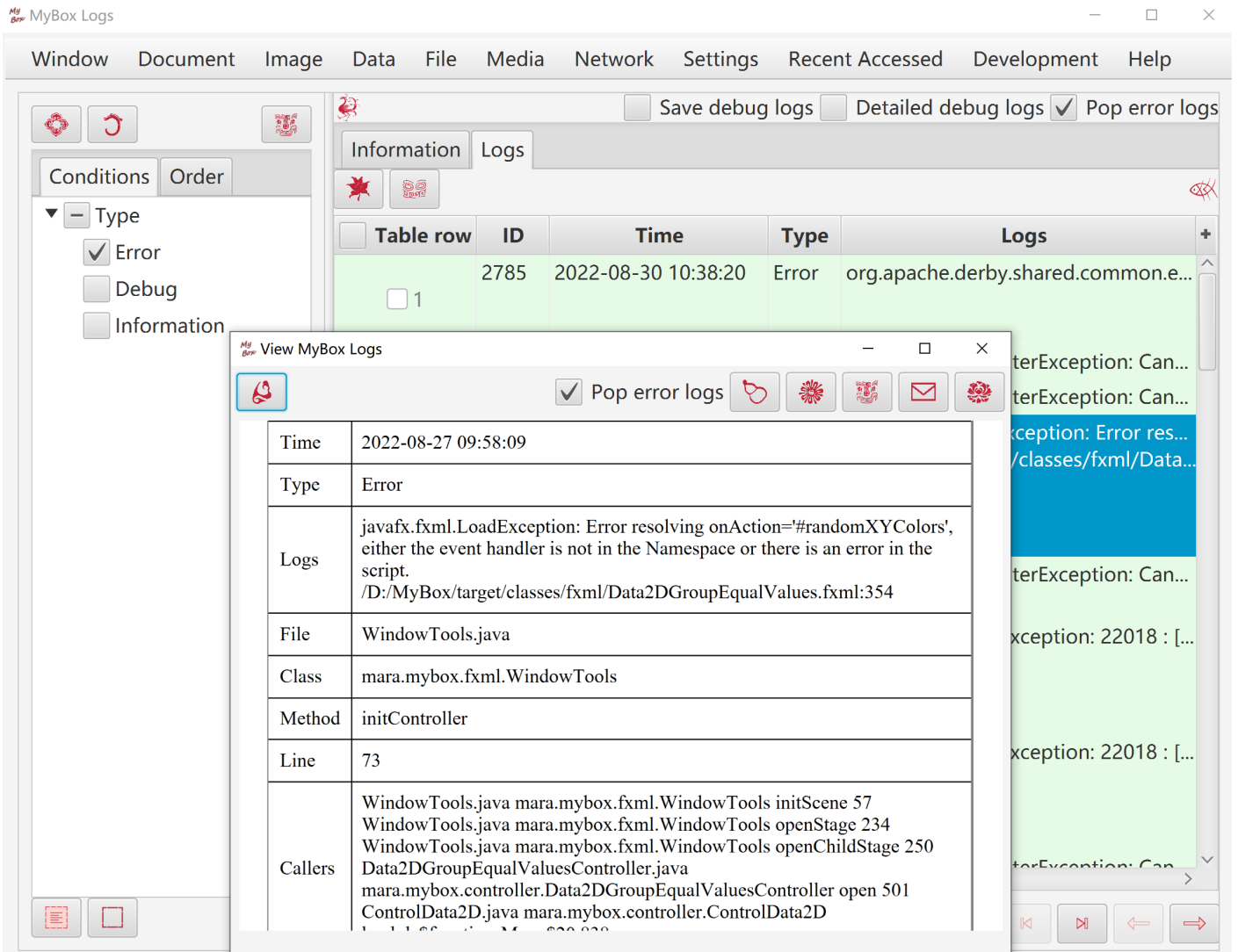
3 MyBox Properties

MyBox JVM Properties	
Java I/O tmp dir	D:\SysTemp\
Javafx runtime version	18.0.1+2
Physical memory	8102MB
JVM maximum available memory	2026MB
Sun Jnu encoding	GBK
IO Unicode Encoding	UnicodeLittle
CPU endian	little
Sun desktop	
Physical screen	216dpi Resultion:3,840 x 2,160 Refresh Rate:60 Bit Depth:32
JavaFx screen	72dpi Size:1,707 x 960 X Scale Factor:2.25 Y Scale Factor:2.25
WebView	Mozilla/5.0 (Windows NT 10.0; Win64; x64) AppleWebKit/610.1 (KHTML, like Gecko) JavaFX/16 Safari/610.1
File encoding	UTF-8
Native encoding	GBK
JVM Default	UTF-8

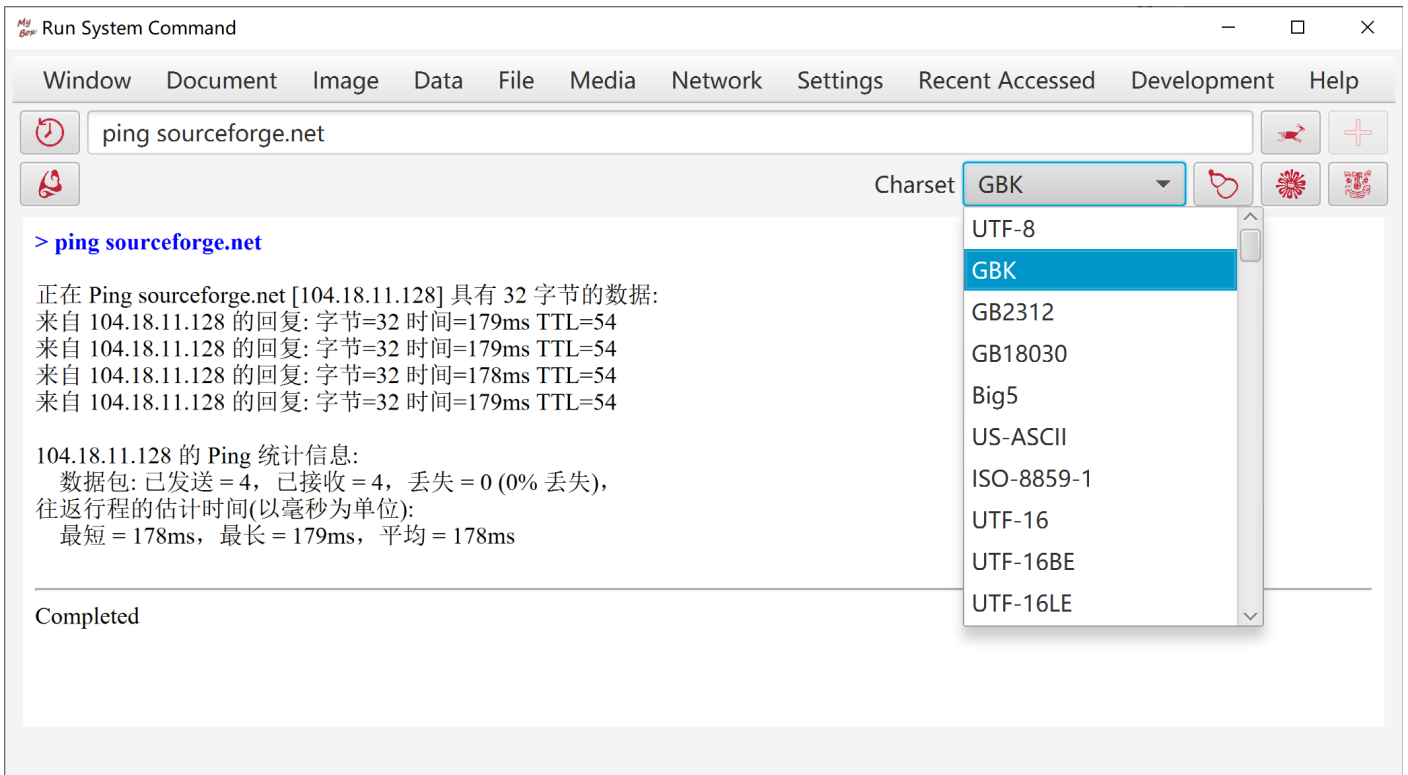
TD

4 MyBox Logs

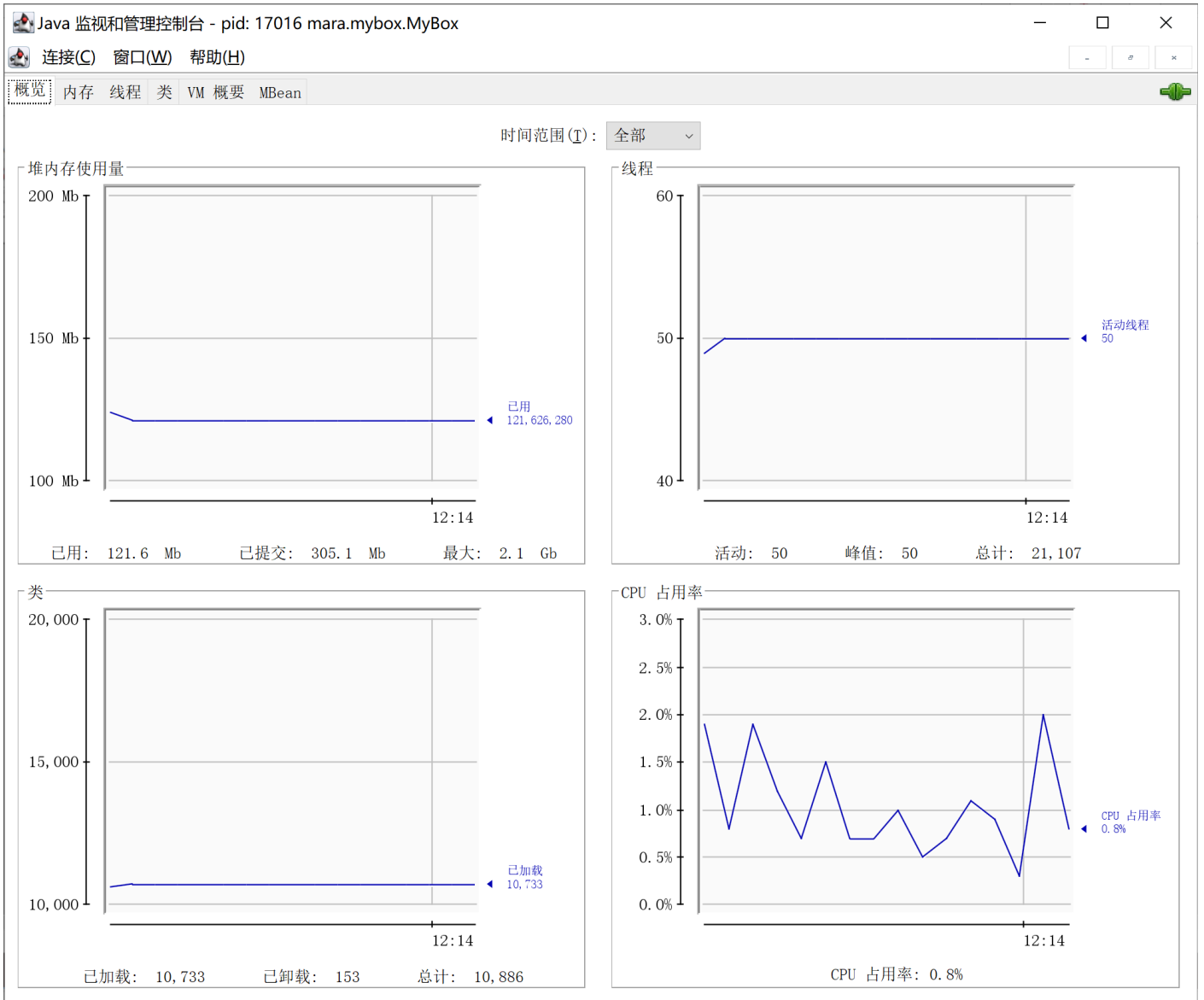
1. Types of MyBox logs: Error, Info, Debug, Console.
 - All logs will be displayed on console.
 - "Error" and "Info" are always written in database.
 - "Debug" are written in database only in Dev Mode.
 - "Console" are never written in database.
2. Fields: ID, time, type, file, class, method, line, callers, comments.
3. "Callers" is the calling chain. Each line is one node and records: file, class, method, line. Calling chains only include methods of MyBox itself.
4. "Error" will cause interface of MyBox Logs Viewer is popped.



5 Run system commands



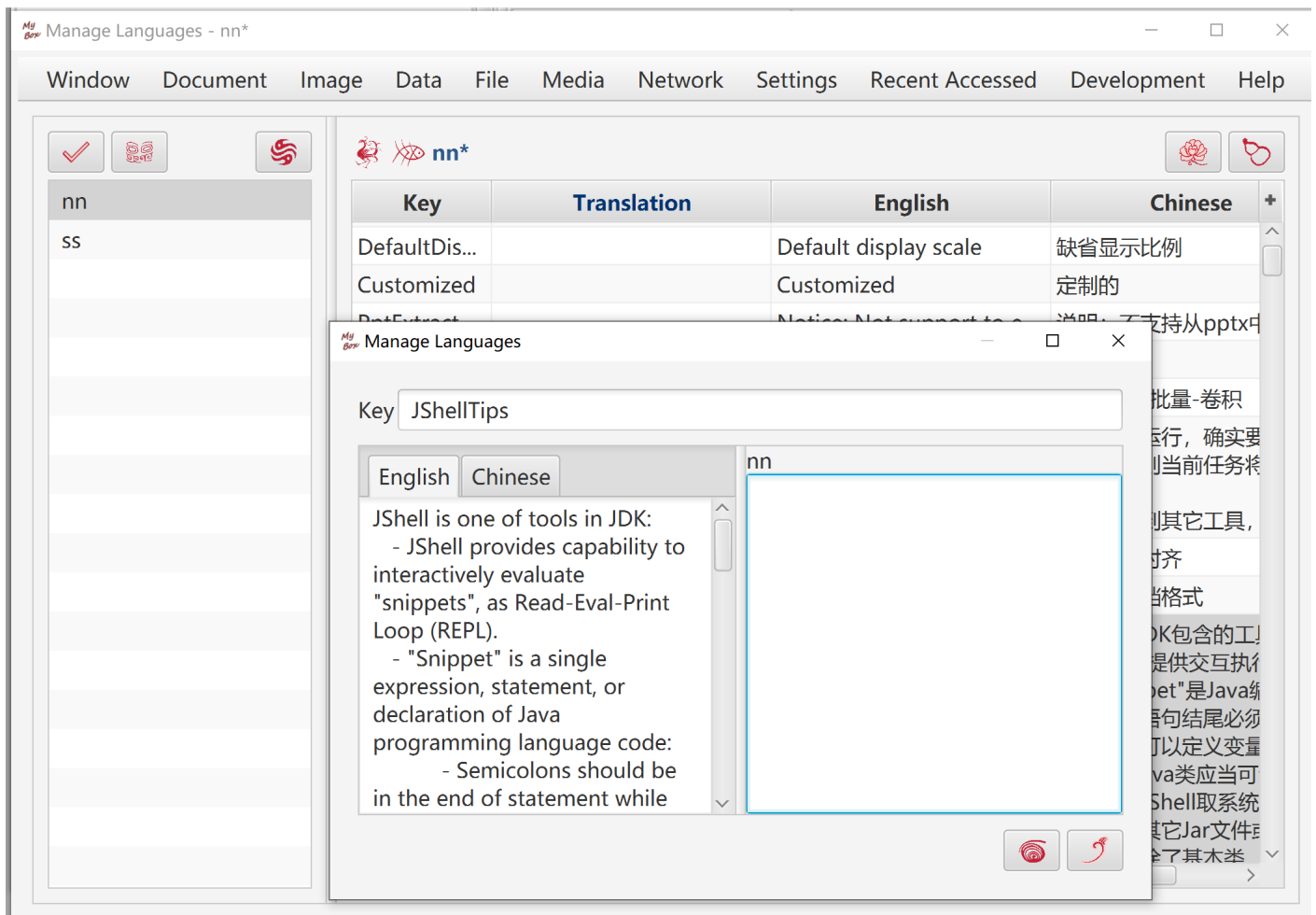
6 Start JConsole(Java Monitoring and Management Console)



7 Manage Languages

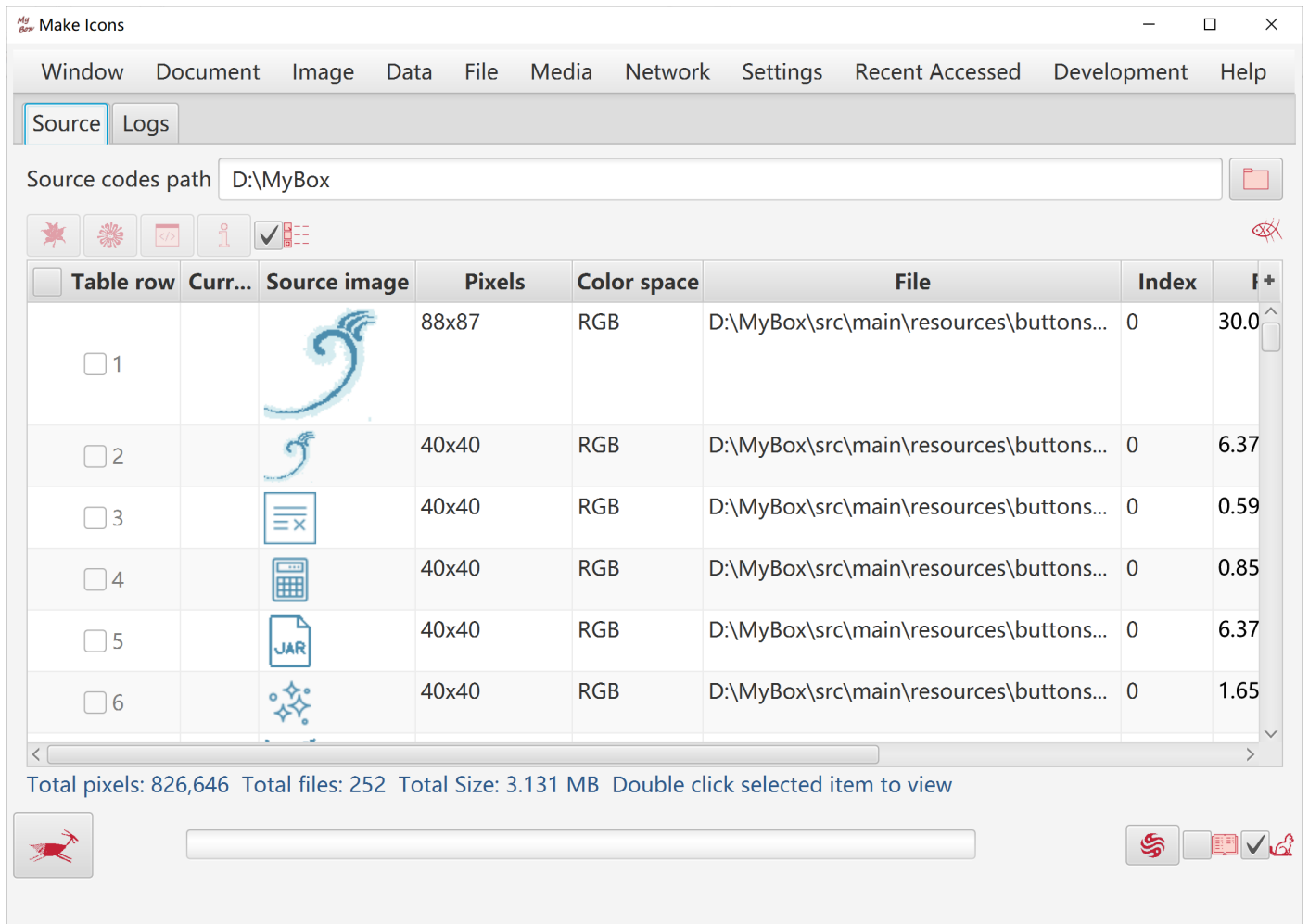
This tool helps to manage customized languages of MyBox:

1. Click button "Add" to create a new language.
2. Edit translation of language items.
 - Select a row in the tables.
 - Click the cell in the row:
 - If its English contains line breaks, then pop text editor to help input multiple lines.
 - If its English is single line, then display a text field to help fill line directly.
 - Keep item empty to use English as default.
 - Right click the cell to select "Copy English" or "Copy Chinese".
3. Click button "Save" to save modification.



8 Make Icons

This tool helps to create MyBox icons in other colors from light-grey icons.



9 MyBox Internal Tables

The screenshot shows the MyBox Internal Tables application window. The main window title is "MyBox Internal Tables : Internal table - 823 - USER_CONF". The interface includes a menu bar (Window, Document, Image, Data, File, Media, Network, Settings, Recent Accessed, Development, Help) and a toolbar. A table list on the left shows various internal tables, with "USER_CONF" selected (ID 823, Type Internal..., Name USER_CONF, Row... 3,311, Colu... 3). The right pane displays the table definition for "USER_CONF" with columns: key_name (string_value), string_value, and int_value (int_value). A tooltip "Table definition" is visible over the right pane. A secondary window titled "Html" is open in the foreground, showing the table definition for "USER_CONF" in a structured format and the corresponding SQL CREATE TABLE statement.

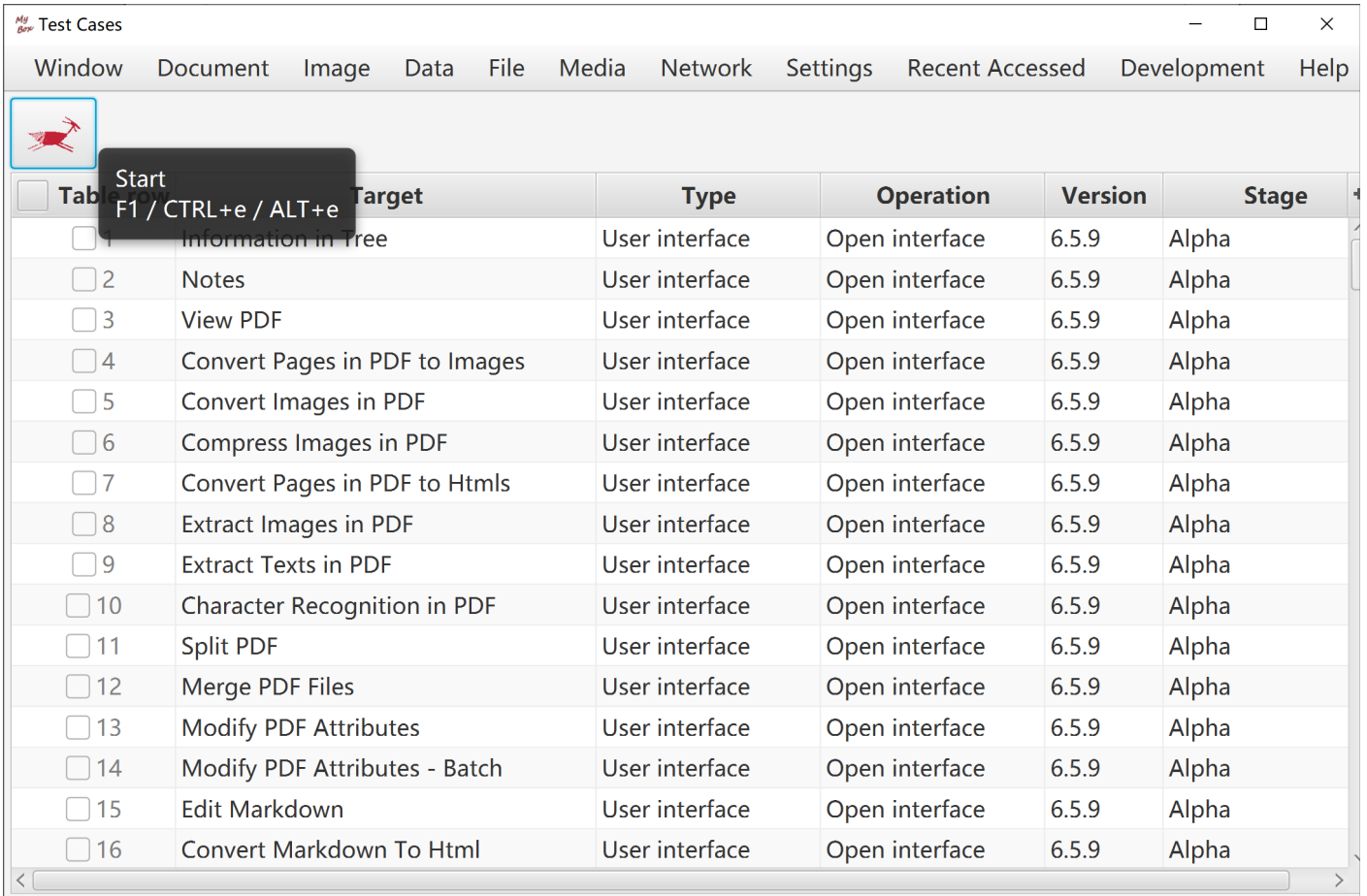
ID	Type	Name	Row...	Colu...
828	Internal...	BLOB_VALUE		2
827	Internal...	NAMED_VALUES		4
826	Internal...	FLOAT_MATRIX		4
825	Internal...	STRING_VALUES		3
824	Internal...	STRING_VALUE		3
823	Internal...	USER_CONF	3,311	3
822	Internal...	SYSTEM_CONF		
821	Internal...	VISIT_HISTORY		
820	Internal...	MYBOX_LOG		
819	Internal...	TREE_NODE_TA		
818	Internal...	TAG		
817	Internal...	TREE_NODE		
816	Internal...	DATA2D_STYLE		
815	Internal...	DATA2D_CELL		
814	Internal...	DATA2D_COLU		
813	Internal...	DATA2D_DEFIN		
812	Internal...	ALARM_CLOCK		
811	Internal...	MEDIA_LIST		
810	Internal...	MEDIA		

Column	Type	Length	Not null	Primary key	Auto generated	Refer to table	Refer to column
key_name	String	32672	Yes	Yes			
string_value	String	32672					
int_value	Integer	10					


```

CREATE TABLE USER_CONF (
key_name VARCHAR(32672) NOT NULL WITH DEFAULT ",
string_value VARCHAR(32672),
int_value INT,
PRIMARY KEY ( key_name )
    
```

10 Automatical Testing: Open Interfaces



The screenshot shows the 'Test Cases' application window with a menu bar (Window, Document, Image, Data, File, Media, Network, Settings, Recent Accessed, Development, Help) and a toolbar with a red crab icon. A table lists 16 test cases, each with a checkbox, a 'Start' field, a 'Target', 'Type', 'Operation', 'Version', and 'Stage'.

<input type="checkbox"/>	Start	Target	Type	Operation	Version	Stage
<input type="checkbox"/>	F1 / CTRL+e / ALT+e	Information in Tree	User interface	Open interface	6.5.9	Alpha
<input type="checkbox"/>		Notes	User interface	Open interface	6.5.9	Alpha
<input type="checkbox"/>		View PDF	User interface	Open interface	6.5.9	Alpha
<input type="checkbox"/>		Convert Pages in PDF to Images	User interface	Open interface	6.5.9	Alpha
<input type="checkbox"/>		Convert Images in PDF	User interface	Open interface	6.5.9	Alpha
<input type="checkbox"/>		Compress Images in PDF	User interface	Open interface	6.5.9	Alpha
<input type="checkbox"/>		Convert Pages in PDF to Htmls	User interface	Open interface	6.5.9	Alpha
<input type="checkbox"/>		Extract Images in PDF	User interface	Open interface	6.5.9	Alpha
<input type="checkbox"/>		Extract Texts in PDF	User interface	Open interface	6.5.9	Alpha
<input type="checkbox"/>		Character Recognition in PDF	User interface	Open interface	6.5.9	Alpha
<input type="checkbox"/>		Split PDF	User interface	Open interface	6.5.9	Alpha
<input type="checkbox"/>		Merge PDF Files	User interface	Open interface	6.5.9	Alpha
<input type="checkbox"/>		Modify PDF Attributes	User interface	Open interface	6.5.9	Alpha
<input type="checkbox"/>		Modify PDF Attributes - Batch	User interface	Open interface	6.5.9	Alpha
<input type="checkbox"/>		Edit Markdown	User interface	Open interface	6.5.9	Alpha
<input type="checkbox"/>		Convert Markdown To Html	User interface	Open interface	6.5.9	Alpha

11 Send Message To Author

Welcome to submit problem reports and software requirements.

Send message to author
- □ ×

Window
Document
Image
Data
File
Media
Network
Settings
Recent Accessed
Development
Help

Send message to author

Title

Issue/Comment/Suggestion

```

<!DOCTYPE html> <HTML>
  <HEAD>
    <meta http-equiv="Content-Type" content="text/html; charset=utf-8" />
    <style type="text/css">
      .center { text-align:center; max-width:95%; }
      table { max-width:95%; margin : 10px; border-style: solid; border-width:2px; border-collapse: collapse;}
      th, td { border-style: solid; border-width:1px; padding: 8px; border-collapse: collapse;}
      th { font-weight:bold; text-align:center;}
      tr { height: 1.2em; }
      .valueBox { border-style: solid; border-width:1px; border-color:black; padding: 5px; border-radius:5px;}
      .boldText { font-weight:bold; }
      .valueText { color:#2e598a; }

    </style>
  </HEAD>
</br> <hr> </br>
  <DIV align="center">
    <TABLE>
      <TR style="font-weight:bold; "> <TH>Name</TH> <TH>Value</TH> </TR>

```

Your name

Operating System

<End of Document>